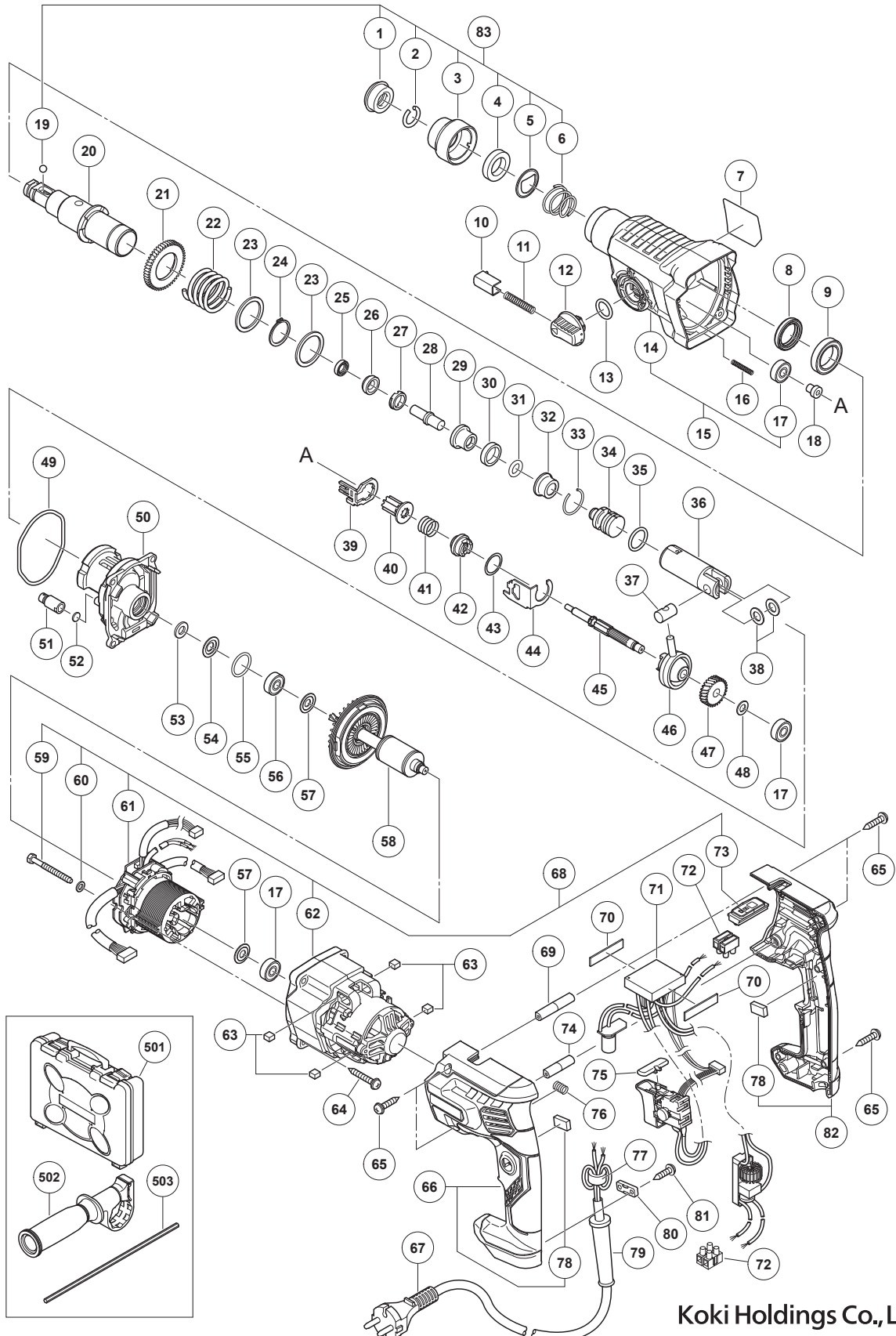


# ELECTRIC TOOL PARTS LIST

## ■ ROTARY HAMMER Model DH 28PEC

2019 · 4 · 25  
(E1)



**PARTS**

DH 28PEC

ITEM NO.	CODE NO.	DESCRIPTION	NO. USED	REMARKS
1	306345	FRONT CAP	1	
2	306340	STOPPER RING	1	
3	374436	GRIP	1	
4	374437	BALL HOLDER	1	
5	374435	HOLDER PLATE	1	
6	322812	HOLDER SPRING	1	
7		NAME PLATE	1	
8	335259	OIL SEAL	1	
9	6805BB	BALL BEARING 6805	1	
10	322789	PUSHING BUTTON	1	
11	317223	PUSHING SPRING	1	
12	334011	CHANGE LEVER	1	
13	878885	O-RING (S-18)	1	
14	374425	GEAR COVER	1	
15	375021	GEAR COVER ASS'Y	1	INCLUD.14,17
16	335800	SPRING (E)	1	
17	608VVM	BALL BEARING 608VVC2PS2L	3	
18	374422	SHAFT HOLDER (B)	1	
19	335300	STEEL BALL D7.0 (10 PCS.)	1	
20	374426	CYLINDER	1	
21	335265	SECOND GEAR	1	
22	374430	SPRING (B)	1	
23	301679	WASHER (A)	2	
24	948310	RETAINING RING FOR D30 SHAFT	1	
25	335262	OIL SEAL (A)	1	
26	374431	HAMMER HOLDER (B)	1	
27	374427	HOLDER SLEEVE	1	
28	374432	SECOND HAMMER	1	
29	374429	HAMMER HOLDER (A)	1	
30	322805	DAMPER (A)	1	
31	322808	O-RING (C)	1	
32	324524	DAMPER HOLDER	1	
33	322807	STOPPER RING	1	
34	374443	STRIKER	1	
35	372816	O-RING	1	
36	372817	PISTON	1	
37	335793	PISTON PIN	1	
38	335794	PISTON WASHER	2	
39	374434	LOCK PLATE	1	
40	374440	SECOND PINION	1	
41	323182	CLUTCH SPRING	1	
42	375022	CLUTCH	1	
43	331315	WASHER	1	
44	374439	CHANGE PLATE (C)	1	
45	374438	SECOND SHAFT	1	
46	335249	RECIPROCATING BEARING	1	
47	374441	FIRST GEAR	1	
48	374442	BEARING WASHER	1	
49	335245	O-RING D72.2	1	
50	375369	INNER COVER	1	

**PARTS**

DH 28PEC

ITEM NO.	CODE NO.	DESCRIPTION	NO. USED	REMARKS
51	334008	AIR CAP	1	
52	324543	FELT PACKING (A)	1	
53	322816	FELT PACKING	1	
54	322818	PACKING WASHER	1	
55	876796	O-RING (P-22)	1	
56	608DDM	BALL BEARING 608DD	1	
57	982631	WASHER (A)	2	
58	361104	ROTOR	1	
59	374450	HEX. HD. TAPPING SCREW D4 X 40	2	
60	323210	BOLT WASHER M4 (BLACK)	2	
* 61	341027	STATOR PCB SET	1	
* 61	341026	STATOR PCB SET	1	FOR GBR (110V)
62	375585	HOUSING	1	
63	374448	HANDLE DAMPER	4	
64	301654	TAPPING SCREW (W/FLANGE) D5 X 35	4	
65	301653	TAPPING SCREW (W/FLANGE) D4 X 20 (BLACK)	8	
66	375579	HANDLE (A) ASS'Y	1	INCLUD.78
* 67	500390Z	CORD	1	(CORD ARMOR D8.8)
* 67	500424Z	CORD	1	(CORD ARMOR D8.8) FOR HKG,THA,MAL
* 67	500408Z	CORD	1	(CORD ARMOR D8.8) FOR AUS,NZL
* 67	500446Z	CORD	1	(CORD ARMOR D8.8) FOR GBR (230V)
* 67	500465Z	CORD	1	(CORD ARMOR D8.8) FOR GBR (110V)
* 68	375583	MOTOR ASS'Y	1	INCLUD.59-62,73
* 68	375584	MOTOR ASS'Y	1	INCLUD.59-62,73 FOR GBR (110V)
69	374445	HANDLE SHAFT (A)	1	
70	373635	RUBBER SHEET	2	
* 71	374452	DC FILTER SWITCH PCB	1	
* 71	374451	DC FILTER SWITCH PCB	1	FOR GBR (110V)
72	958308Z	PILLAR TERMINAL (A)	2	
73	375368	PANEL	1	
74	374446	HANDLE SHAFT (B)	1	
75	322853	PUSHING BUTTON	1	
76	374421	HANDLE SPRING	1	
* 77	334379	FERRITE CORE	1	EXCEPT FOR GBR (110V)
78	375581	SUPPORT (B)	2	
79	953327	CORD ARMOR D8.8	1	
80	937631	CORD CLIP	1	
81	984750	TAPPING SCREW (W/FLANGE) D4 X 16	2	
82	375580	HANDLE (B) ASS'Y	1	INCLUD.78
83	375363	GRIP SET	1	INCLUD.1-6,19

**STANDARD ACCESSORIES**

DH 28PEC

ITEM NO.	CODE NO.	DESCRIPTION	NO. USED	REMARKS
501	374320	CASE	1	
502	374447	SIDE HANDLE	1	
503	303709	DEPTH GAUGE	1	

**OPTIONAL ACCESSORIES**

ITEM NO.	CODE NO.	DESCRIPTION	NO. USED	REMARKS
601	306885	DUST COLLECTOR (B) ASS'Y	1	INCLUD.602,610
602	986802	DUST COLLECTOR ASS'Y	1	INCLUD.603-609
603	986803	DUST COVER	1	
604	986804	SEAL COVER	1	
605	948310	RETAINING RING FOR D30 SHAFT	1	
606	958063	WASHER	1	
607	959150	STEEL BALL D6.35 (10 PCS.)	19	
608	986805	OUTER RACE	1	
609	986806	SOCKET	1	
610	306910	SOCKET ADAPTER (B)	1	
611	971787	DUST CUP	1	
612	931844	STOPPER	1	
613	321814	DRILL CHUCK 13VLRB-D	1	INCLUD.614
614	331966	FLAT HD. SCREW (LEFT HAND) M6 X 20	1	
615	321813	DRILL CHUCK 13VLD-D	1	
616	971511Z	+ DRIVER BIT (A) NO.2 25L	1	
617	971512Z	+ DRIVER BIT (A) NO.3 25L	1	
618	971794	ANCHOR SETTING ADAPTER A W1/4" (MANUAL)	1	
619	971795	ANCHOR SETTING ADAPTER A W5/16" (MANUAL)	1	
620	971796	ANCHOR SETTING ADAPTER A W3/8" (MANUAL)	1	
621	971797	ANCHOR SETTING ADAPTER A W1/2" (MANUAL)	1	
622	971798	ANCHOR SETTING ADAPTER A W5/8" (MANUAL)	1	
623	971799	ANCHOR SETTING ADAPTER B W1/4" (MANUAL)	1	
624	971800	ANCHOR SETTING ADAPTER B W5/16" (MANUAL)	1	
625	971801	ANCHOR SETTING ADAPTER B W3/8" (MANUAL)	1	
626	971802	ANCHOR SETTING ADAPTER B W1/2" (MANUAL)	1	
627	971803	ANCHOR SETTING ADAPTER B W5/8" (MANUAL)	1	
628	320859	SYRINGE (BLOW-OUT BULB TYPE)	1	
629	944477	COTTER	1	
630	982684	CENTER PIN (A) 109L FOR CORE BIT D32-38	1	
631	982685	CENTER PIN (B) 104L FOR CORE BIT D45-90	1	
632	335781	GREASE FOR ROTARY HAMMER (500G)	1	
633	335782	GREASE FOR ROTARY HAMMER (60G)	1	