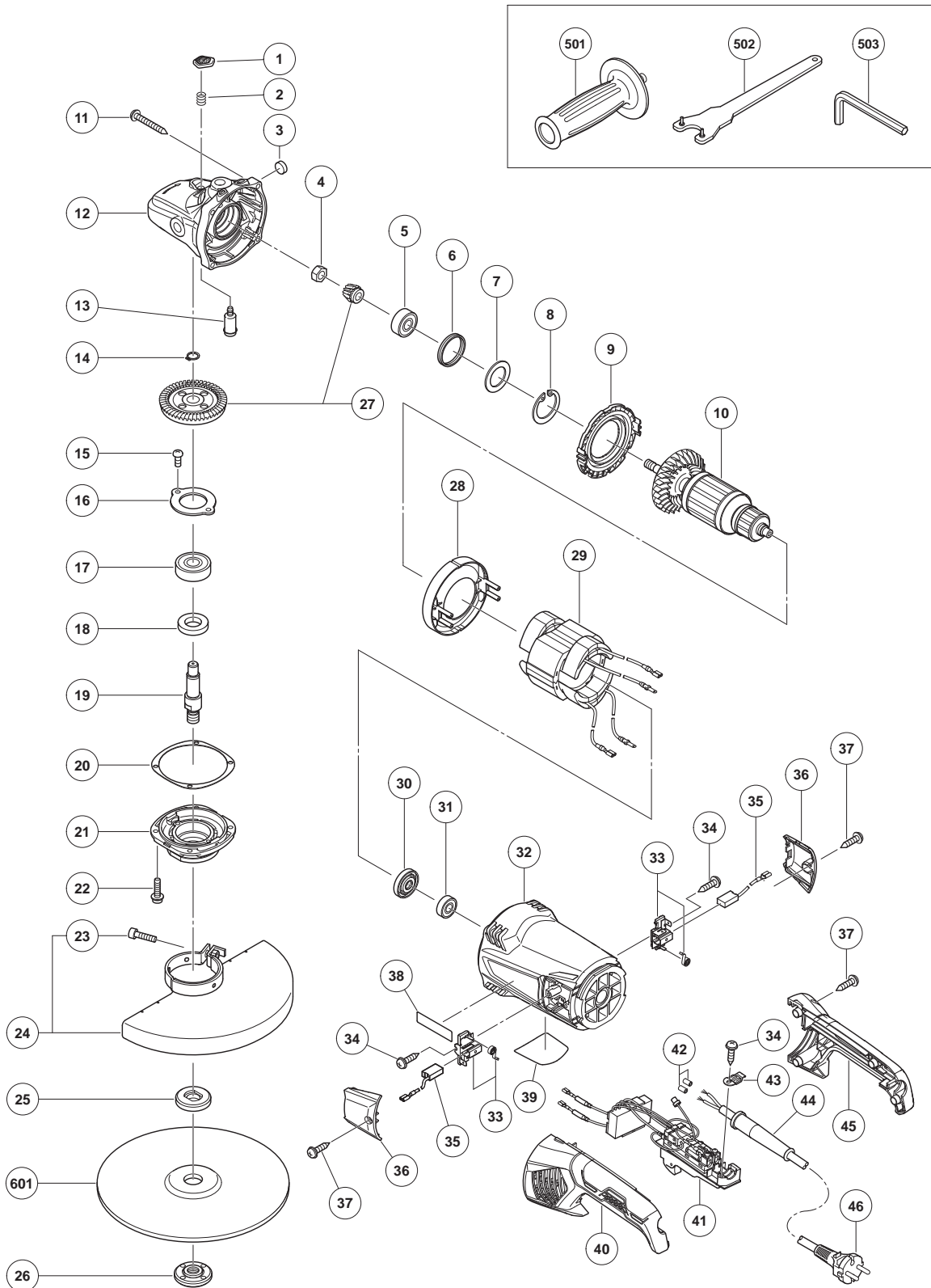


# ELECTRIC TOOL PARTS LIST

## DISC GRINDER Model G 23SWU2

2018-12-13  
(E1)



**PARTS**

G 23SWU2

ITEM NO.	CODE NO.	DESCRIPTION	NO. USED	REMARKS
1	337641	PUSHING BUTTON	1	
2	320219	SPRING	1	
3	937033	FELT WASHER	1	
4	320226	SPECIAL NUT M10	1	
5	6301DD	BALL BEARING 6301DDCMPS2L	1	
6	330031	RUBBER RING	1	
7	337642	WASHER	1	
8	948391	RETAINING RING FOR D40 HOLE	1	
9	337640	FAN GUIDE (B)	1	
10	360982E	ARMATURE 220V-230V	1	
11	323209	TAPPING SCREW (W/FLANGE) D5 X 35 (BLACK)	4	
12	337650	GEAR COVER ASS'Y	1	INCLUD.1-3,5-8,13
13	306890	LOCK PIN	1	
14	939542	RETAINING RING FOR D12 SHAFT (10 PCS.)	1	
15	949236	MACHINE SCREW M5 X 10 (10 PCS.)	2	
16	320229	BEARING COVER (B)	1	
17	6302VV	BALL BEARING 6302VVCMP2L	1	
18	990852	FELT PACKING (B)	1	
19	320234	SPINDLE	1	
20	320228	SEAL PLATE	1	
21	339726	PACKING GLAND	1	
22	994192	HEX. SOCKET HD. BOLT (W/FLANGE) M5 X 16	4	
23	949760	HEX. SOCKET HD. BOLT M8 X 25 (10 PCS.)	1	
24	338292	WHEEL GUARD ASS'Y	1	INCLUD.23
25	937907Z	WHEEL WASHER (C)	1	
26	373779	WHEEL NUT M14 X 2	1	
27	330688	GEAR AND PINION SET	1	
28	337639	FAN GUIDE (A)	1	
29	341025E	STATOR ASS'Y 220V-230V	1	
30	330029	DUST SEAL	1	
31	6000VV	BALL BEARING 6000VVCMP2L	1	
32	337643	HOUSING	1	
33	337646	BRUSH HOLDER	2	
34	984750	TAPPING SCREW (W/FLANGE) D4 X 16	3	
35	999059	CARBON BRUSH (1 PAIR)	2	
36	337649	BRUSH COVER	2	
37	305812	TAPPING SCREW (W/FLANGE) D4 X 16 (BLACK)	6	
38		BRAND LABEL	1	
39		NAME PLATE	1	
40	337644	HANDLE (A)	1	
41	374787	CONTROLLER SWITCH	1	
* 42	981373	TUBE (D)	2	
* 42	981373	TUBE (D)	1	FOR HKG
43	331336	CORD CLIP	1	
* 44	958049	CORD ARMOR D8.2	1	
* 44	940778	CORD ARMOR D10.7	1	
45	337645	HANDLE (B)	1	
* 46	500492Z	CORD	1	(CORD ARMOR D10.7)
* 46	500423Z	CORD	1	(CORD ARMOR D8.2) FOR HKG

